

APPROVED BY



BAHRIA TOWN



urban
dwellings

Pakistan's first-ever earthscraper

Being developed on an area of 624,000 sqft, this ultra-modern architecture seamlessly combines the contentment of a home and the desire for luxury. The perfectly orchestrated private entrance and a 21st-century facade give way to a clean, modern exterior; undoubtedly, Urban Dwellings has been crafted to perfection.

Earthscraper is a building that extends from the surface and deep into the underground. In simple terms, earth-scrapers are inverted skyscrapers. Urban Dwellings is an earthscraper 80 feet deep, with foundations as deep as 200 feet.



Architect's Vision

The architecture for the building takes inspiration from creating a vertical neighborhood. The elaborate courtyards, green spaces, and terraces give life to the surroundings. Designed keeping HENRY millennials in mind, the comfort of lush green spaces, and the joy of having a connected lifestyle, Urban Dwellings will be an ideal place for years to come. Driven by a family-centric mantra, infused with the beauty of the Bahria Garden City, Urban Dwellings was designed to uplift the lifestyles of the future generations. Affan Ahmed, ORAD

Urban Dwellings

Set against the canvas of the city's beatific skyline, Urban Dwellings opens up a genre of private, shared & communal spaces intricately molded to radiate the perfect sense of family living. Covering over 550,000 sq. ft., it's a lifestyle destination built for sustainability.



**Pakistan's First-ever
Earthscraper**



**226 Spacious
Apartments**



**22 Floors
6 Basements**



**Earthquake
Resistant Structure**



**Meets all
Regulations**



Location Map

Truly a stellar location, just minutes from the main G.T Road, a high-point in the greens of Bahria. Offering stunning 360 degree panoramic views, this eminent location is home to one of the best educational, commercial, healthcare and recreational facilities in the city.



GT Road

2 min



Bahria Golf Course

6 min



Giga Mall

4 min



DHA Phase II

4 min

Bahria Town
Phase 1-4

Beacon House
School

GT Road

Bahria
Garden City

CineGold
Plex

Bahria Town
Zoo

Bahria
Golf Course

urban
dwellings

DHA II
Gate

DHA Phase II

Giga Mall

Bahria Garden
City Commercial

Riphah
Int. Hospital

Institute of
Space Technology

Potohar
Avenue

Islamabad Expressway

T-Chowk



Extraordinary Amenities

Boasting a pet-friendly atmosphere, the construction covers approx. 50% of the land area, the remaining being developed around users' preferences such as astounding open spaces, terraces-based facilities, providing a unique blend and a new concept of vertical living.



Spa & Sauna



**Open-air
Cinema**



**Green
Terraces**



**Health &
Fitness Hub**



**Community
Hall**



**Kids' Activity
Areas**



**Rooftop
Swimming Pool**



**Co-working
Spaces**



**Communal
Laundry Rooms**



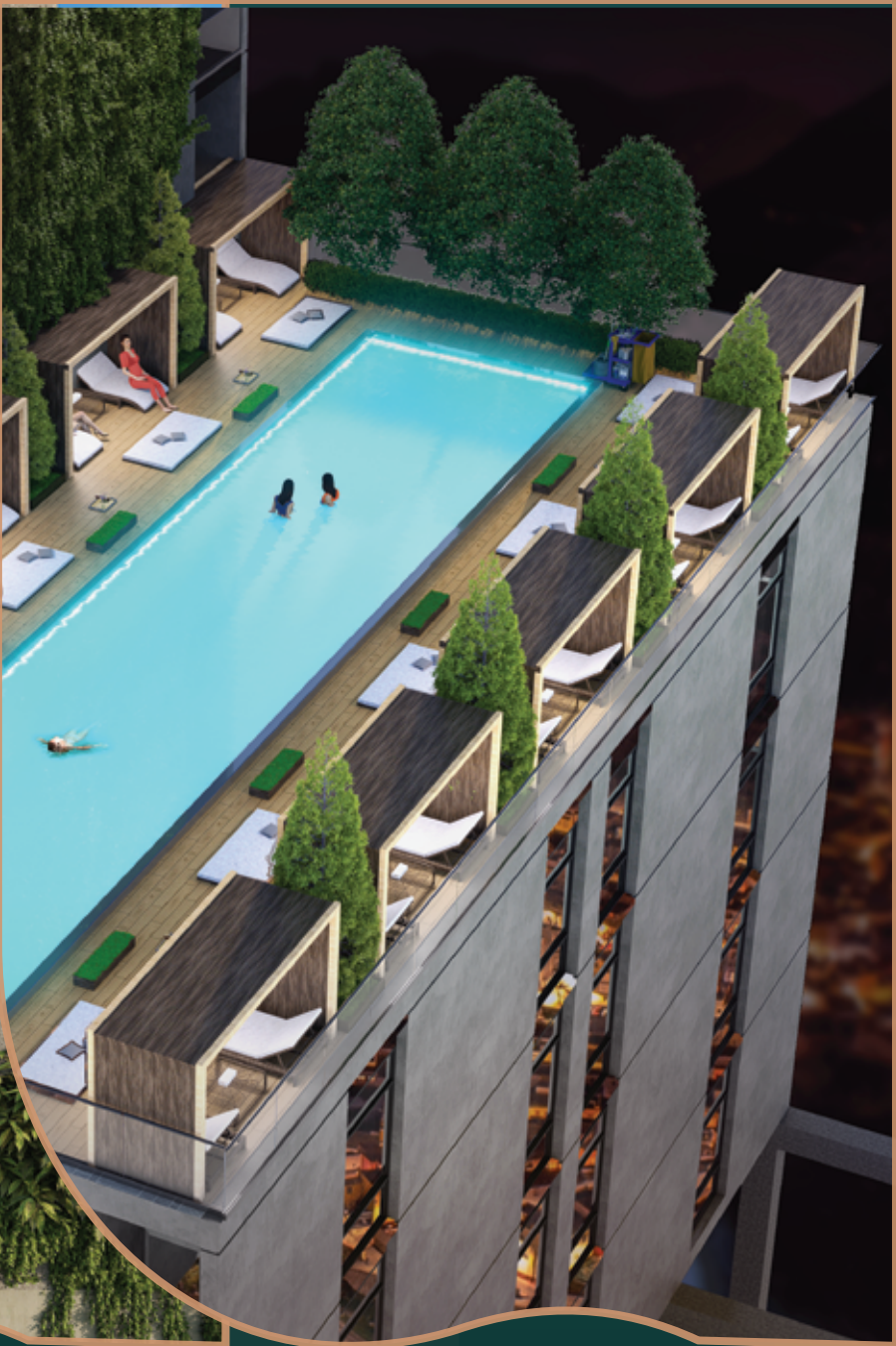
**Double-height
Residential Foyer**



**Indoor
Mosque**



**Club/Cigar
Room**



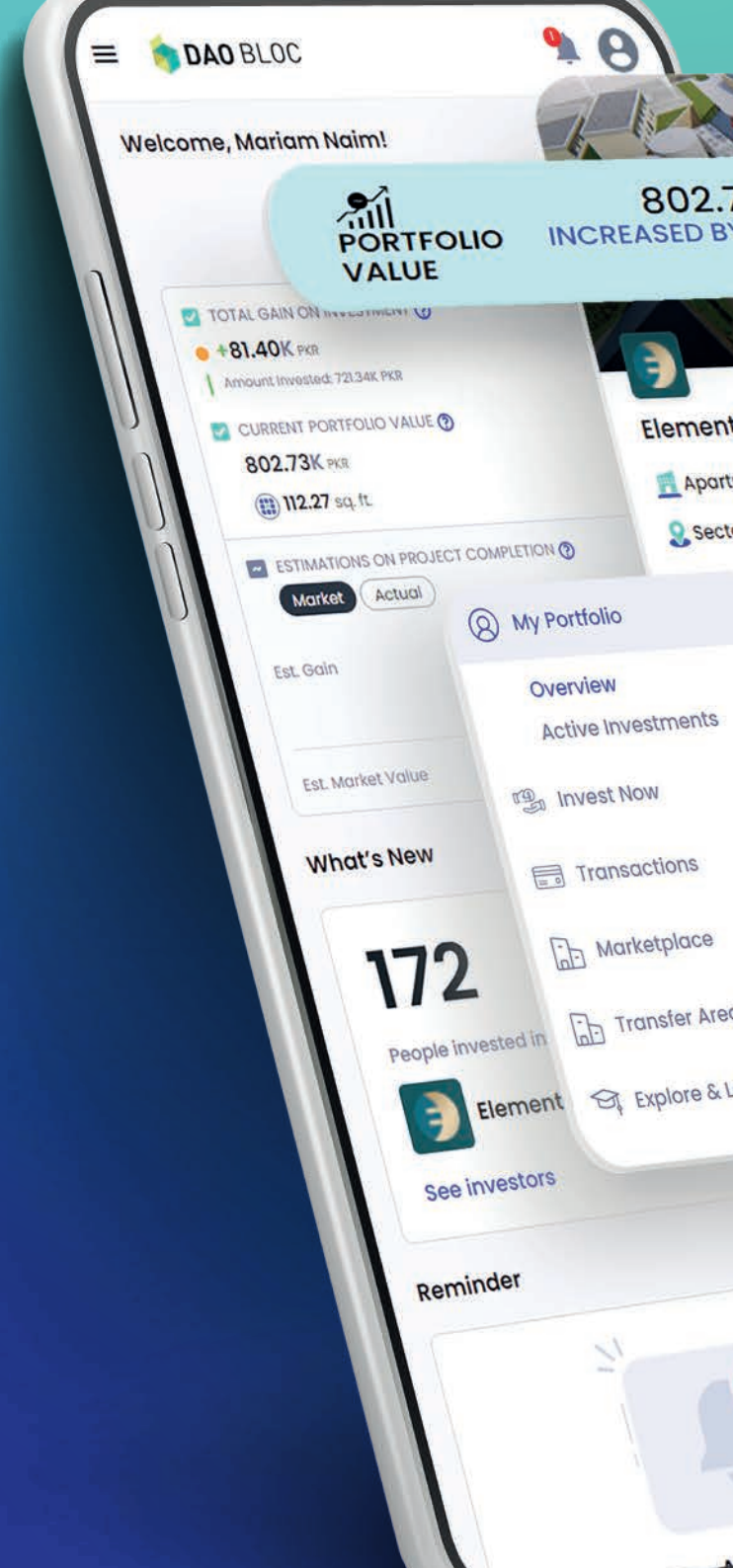


Making real estate investments and ownership **inclusive and secure** by connecting players in the **ecosystem** & **enabling masses** through **technology**.

- Secure Transactions
- Flexible Ownership
- Fair Valuation
- Digital Journey

Our tech platform (**BLOC**) offers a **secure & transparent** investment experience for the **investors**

- Personalized Dashboard
- Investment Options
- Fast Transfers
- Construction updates





Our Partners



urban
dwellings

dream living,
redefined



daqiq.com

